



[www.stiga.com](http://www.stiga.com)

# Illustrated Parts List

**for model:**

**SBC 435 H**

- Use GLOBAL GARDEN PRODUCT genuine spare parts specified in the parts list for repair and/or replacement.
- Then contents described in the parts list may change due to improvement.
- The drawings of the spare part are only indicative and might not represent the part in question exactly.
- The indications "right" - "left" - "front" - "rear" refer to the position of the operator when using the machine.
- When placing orders of parts for repair and/or replacement, make sure that the illustrated parts list is the one applying to the machine's year of manufacture, as shown on the identification plate attached to the machine.

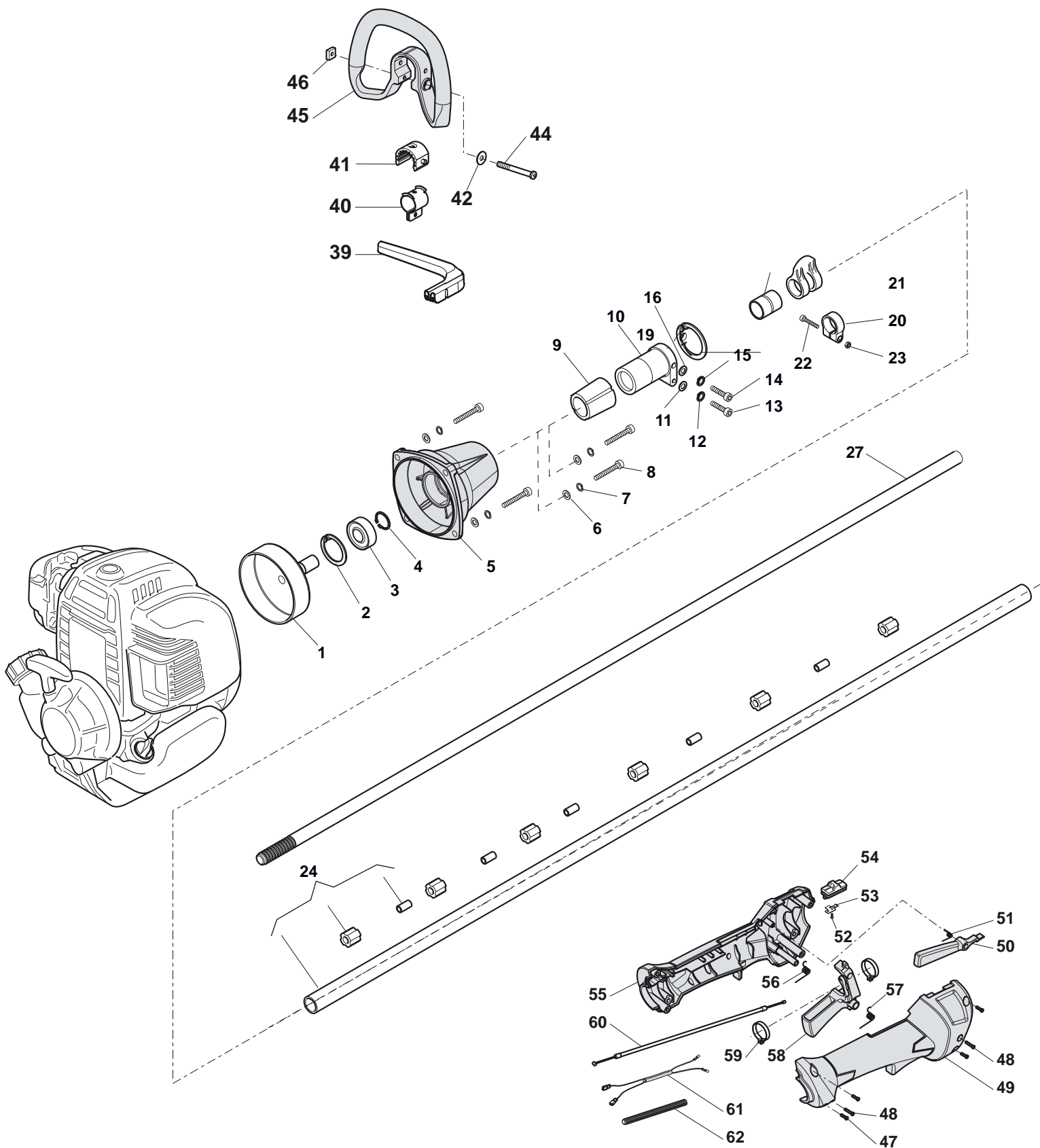
© Copyright 2014 Global Garden Products

All content is subject to copyright by Global Garden Products and may not be reproduced in whole or in part by any means, electronic or otherwise, without prior written approval.

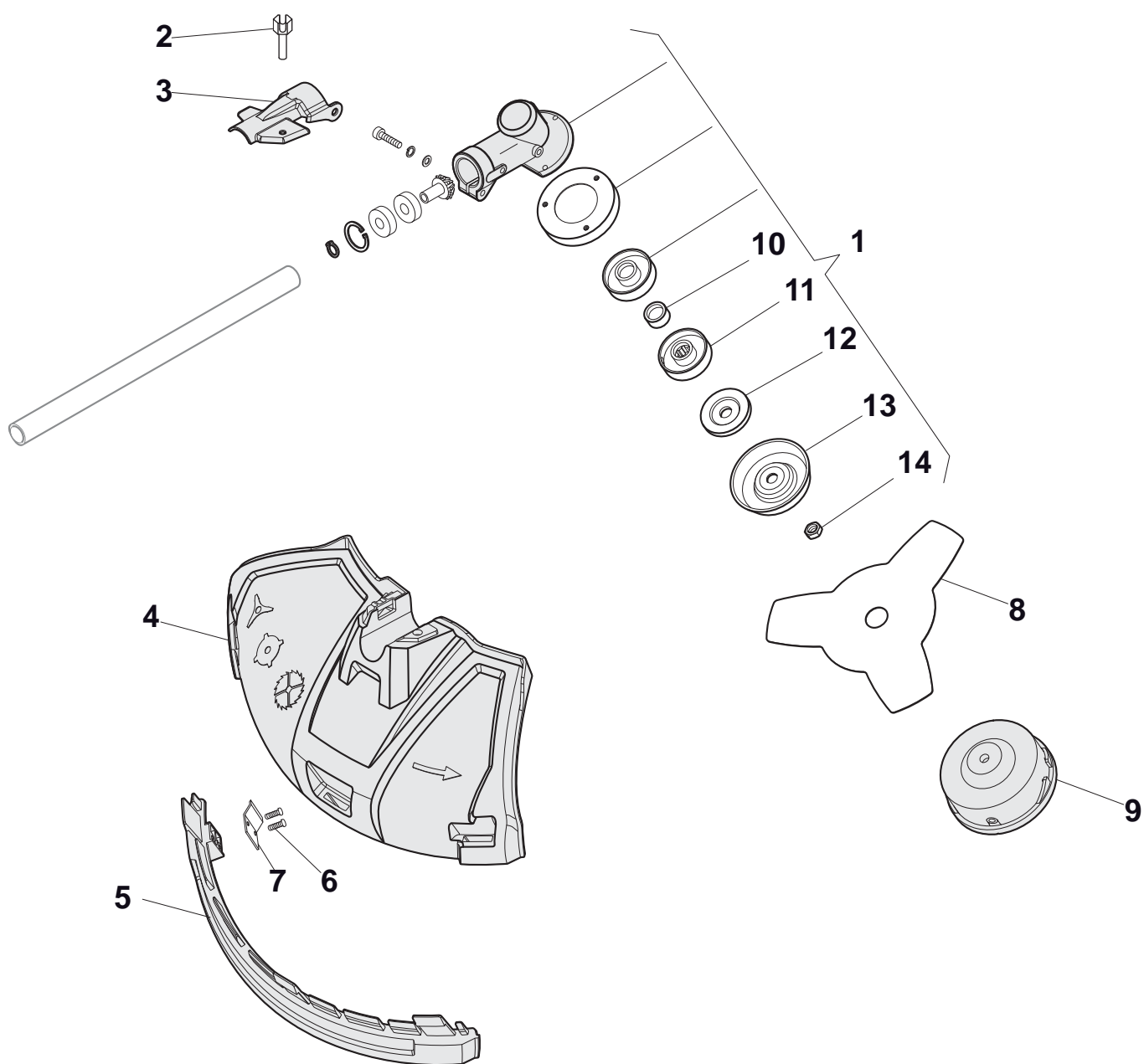
THIS INFORMATION IS NOT INTENDED FOR SALE OR RESALE, AND THIS NOTICE MUST REMAIN ON ALL COPIES.

[www.ggp-group.com](http://www.ggp-group.com)





Transmission Parts				
POS	CODE	Q.TY	DESCRIPTION	NOTES
1	118802495/0	1	Clutch drum	
2	112610800/0	1	Seeger ring	
3	119216048/0	1	Bearing	
4	112609200/0	1	Seeger ring	
5	118802492/0	1	Output block	
6	112521330/0	4	Washer	
7	112521330/0	4	Washer	
8	2132180	4	Screw	
9	118802493/0	1	Bumper	
10	118802494/0	1	Sleeve	
11	112521330/0	1	Washer	
12	112521330/0	1	Washer	
13	2132180	1	Screw	
14	2135010	1	Screw	
15	112521320/0	1	Washer	
16	112521320/0	1	Washer	
18	118802586/0	1	Plastic Bush	
20	118802587/0	1	Harness Support	
19	118802588/0	1	Ring	
21	112760475/0	1	Screw	
22	112291000/0	1	Nut	
24	118802491/0	1	Transmission tube assy	
26	118802457/0	1	Transmission shaft	
27	118802535/0	1	Protective front handle	
28	118802539/0	1	Locking collar	
29	118802537/0	1	Rubber sleeve	
30	112521330/0	1	Washer	
31	118802542/0	1	Screw	
32	118802534/0	1	Front handle, Grey	
33	112154320/0	1	Nut	
34	123878020/0	4	Screw	
35	112727794/0	2	Screw	
36	118802471/0	1	Right Handgrip, Grey	
37	118802472/0	1	Trigger control, Yellow	
38	118802562/0	1	Torsion spring	
39	2123070	1	Screw	
40	118802468/0	1	Flameout Reed	
41	118802469/0	1	Flameout switch, Red	
42	118802470/0	1	Left Handgrip, Grey	
43	118802474/0	1	Trigger spring	
44	118802473/0	1	Trigger Lever, Yellow	
45	118802479/0	2	Fixing ring	
46	118802725/0	1	Throttle Cable	
47	118802477/0	1	Flame lines	
48	118802478/0	1	Conductor casing	



SBC 435 H				Gear Case
POS	CODE	Q.TY	DESCRIPTION	NOTES
1	118802460/0	1	Gear Case Assy	
2	118802579/0	1	Screw	
3	118802480/0	1	Plate	
4	118802323/0	1	Safety cover Ass.Y	
5	118802580/0	1	Splash Guard	
6	123878121/0	2	Screw	
7	118802578/0	1	Line Cutter Blade	
8	1911-9146-01	1	Blade	
9	1911-9142-01	1	Hedges Nylon Head	
10	118802467/0	1	Shaft Collar	
11	118802464/0	1	Plate	
12	118802465/0	1	Plate	
13	118802466/0	1	Cover	
14	2452090	1	Nut	