

Genuine Spare Parts

www.stiga.com

SB 425 HD Model Year 2013

- Use GLOBAL GARDEN PRODUCT Genuine Spare Parts specified in the parts list for repair and/or replacement.
- The contents described in the parts list may change due to improvement.
- The drawings of the spare parts are only indicative and might not represent the part in question exactly.
- The indications "right" - "left" - "front" - "rear" refer to the position of the operator when using the machine.
- When placing orders of parts for repair and/or replacement, make sure that the illustrated parts list is the one applying to the machine's year of manufacture, as shown on the identification plate attached to the machine.

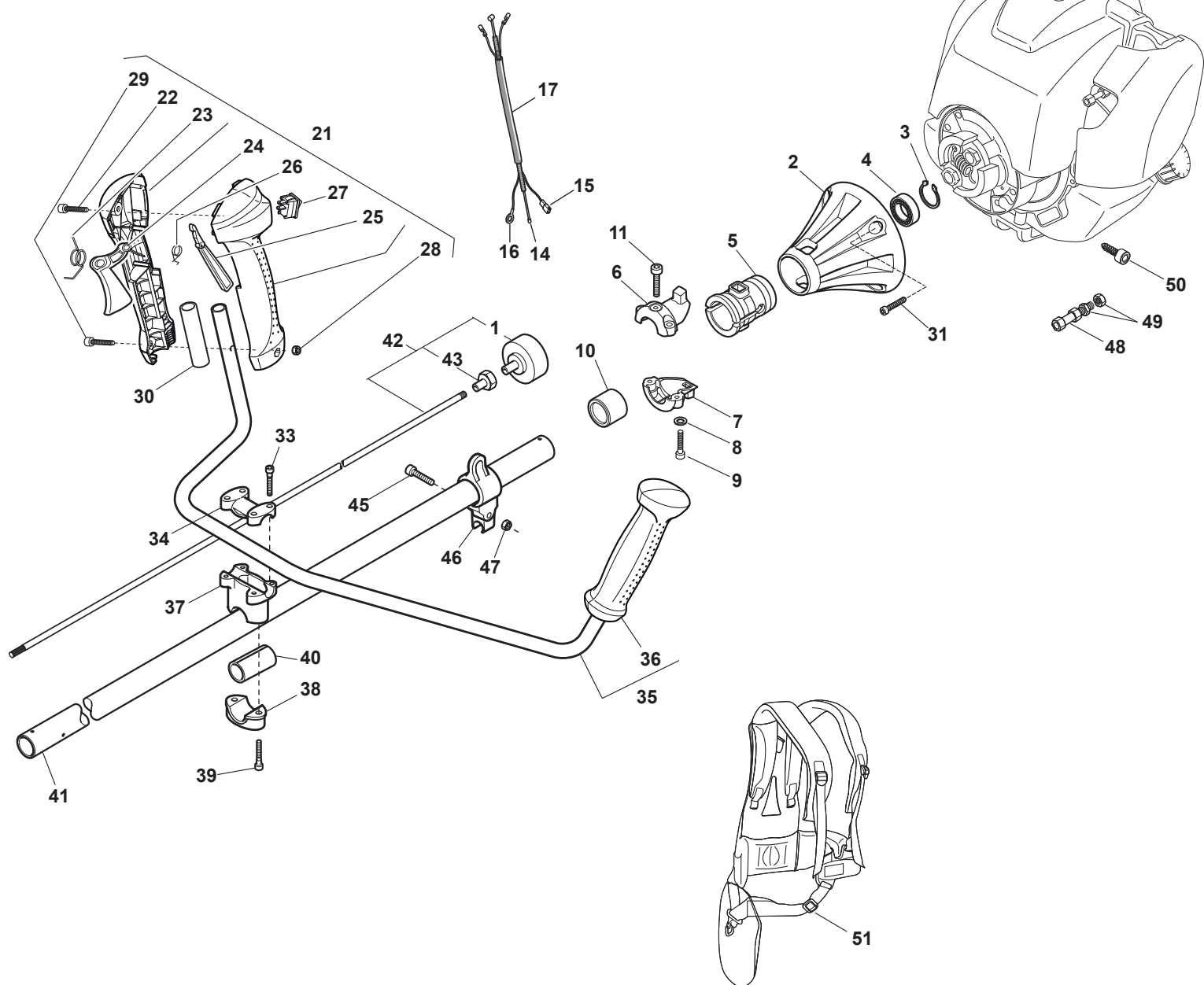
© Copyright 2013 Global Garden Products

All content is subject to copyright by Global Garden Products and may not be reproduced in whole or in part by any means, electronic or otherwise, without prior written approval.

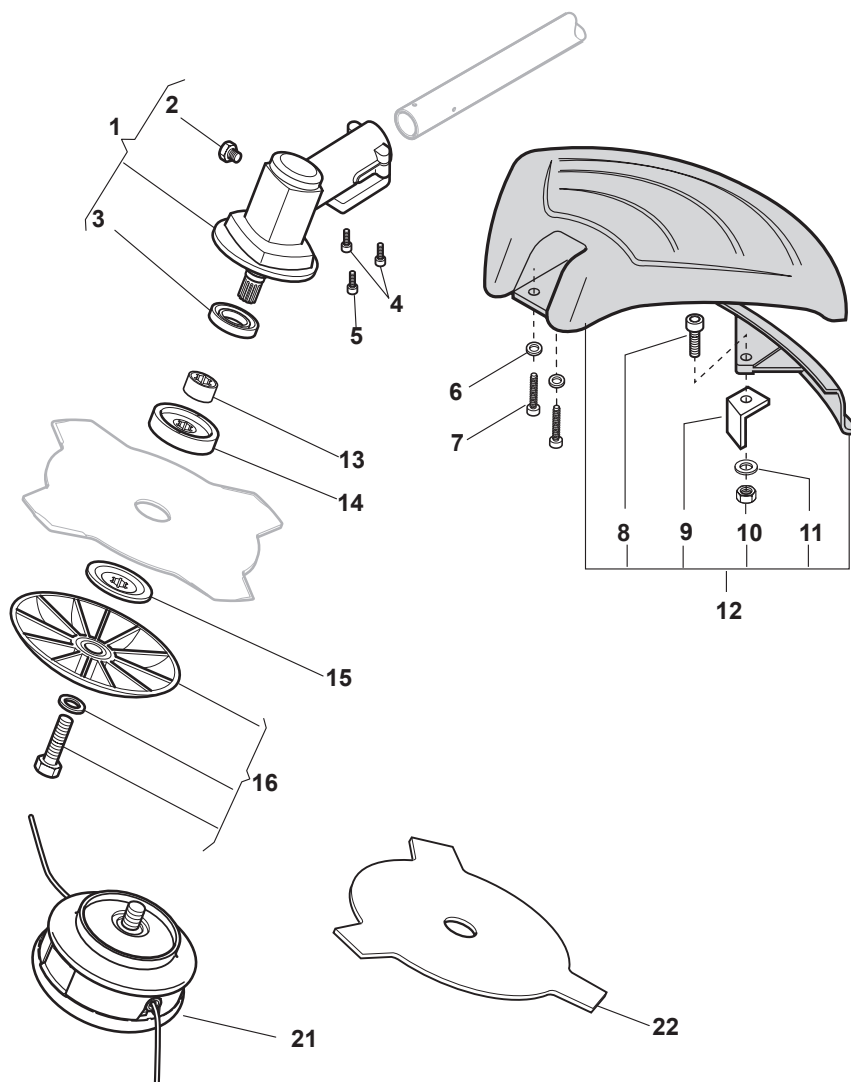
THIS INFORMATION IS NOT INTENDED FOR SALE OR RESALE, AND THIS NOTICE MUST REMAIN ON ALL COPIES.



POWERED by
HONDA



POSITION	PART No.	Q.Ty	DESCRIPTION	NOTES
1	3L4121881/1	1	Clutch Drum	
2	323782006/0	1	Support Trasm.Assy	
3	3353080	1	Ring	
4	3112170	1	Ball Bearing	
5	323275018/0	1	Grommet	
6	323720000/0	1	Support	
7	323720001/0	1	Support	
8	2370050	2	Washer	
9	2135030	2	Screw	
10	323044217/0	1	Bushing	
11	2135010	1	Screw	
14	123066031/0	1	Wire Ass.Y	
15	123065002/0	1	Coil-Switch Cable	
16	123065003/0	1	Earth Cable	
17	3786240	1	Wire Sheath	
21	383300021/0	1	Handle Ass.Y	
22	2123030	1	Screw	
23	1L3654270/1	1	Spring	
24	323315083/0	1	Throttle Lever	
25	323315084/0	1	Safety Lever	
26	1L3654280/1	1	Spring	
27	3210970	1	Stop Switch	
28	112154330/0	1	Nut	
29	2135050	1	Screw	
30	323655001/0	1	Reduction	
31	2132110	4	Screw	
33	2135060	4	Screw	
34	3L4541500/1	1	Upper Handgrip Support	
35	383394008/0	1	Handle Ass.Y	
36	323395052/0	1	Left Handle	
37	3L4541490/1	1	Handle Support	
38	4541510	1	Lower Handgrip Support	
39	2135050	2	Screw	
40	3721410	2	Rubber Facing	
41	383869067/0	1	Trasmission Pipe Ass.Y	
42	4251410	1	Transmission Shaft Ass.Y	
43	3642221	1	Bearing Hub	
45	2135040	1	Screw	
46	323780000/0	1	Harness Support	
47	2412030	1	Nut	
48	1L3630600/1	1	Throttle Cable Adjuster	
49	2412090	2	Nut	
50	2135020	1	Screw	
51	123046000/0	1	Harness	



POSITION	PART No.	Q.Ty	DESCRIPTION	NOTES
1	3L4252770/2	1	Gear Case Assy (Incl. 2÷21)	
2	2653460	1	Screw	
3	3121180	1	Seal Ring	
4	2135050	2	Screw	
5	2653090	1	Screw	
6	2312150	2	Washer	
7	2135060	2	Screw	
8	2135030	1	Screw	
9	3615000	1	Line Cutter	
10	112154330/0	1	Nut	
11	2312150	1	Washer	
12	8563570	1	Safety Cover Ass.Y	
13	3660680	1	Collar	
14	3641650	1	Upper Ring Nut	
15	3612650	1	Lower Ring Nut	
16	4560610	1	Stabilizer	
21	3L4353240/1	1	2 Hedges Nylon Head	
22	6031172	1	3 Teeth Disc 25 Cm	