

Genuine Spare Parts

www.stiga.com

SB 425 H Model Year 2013

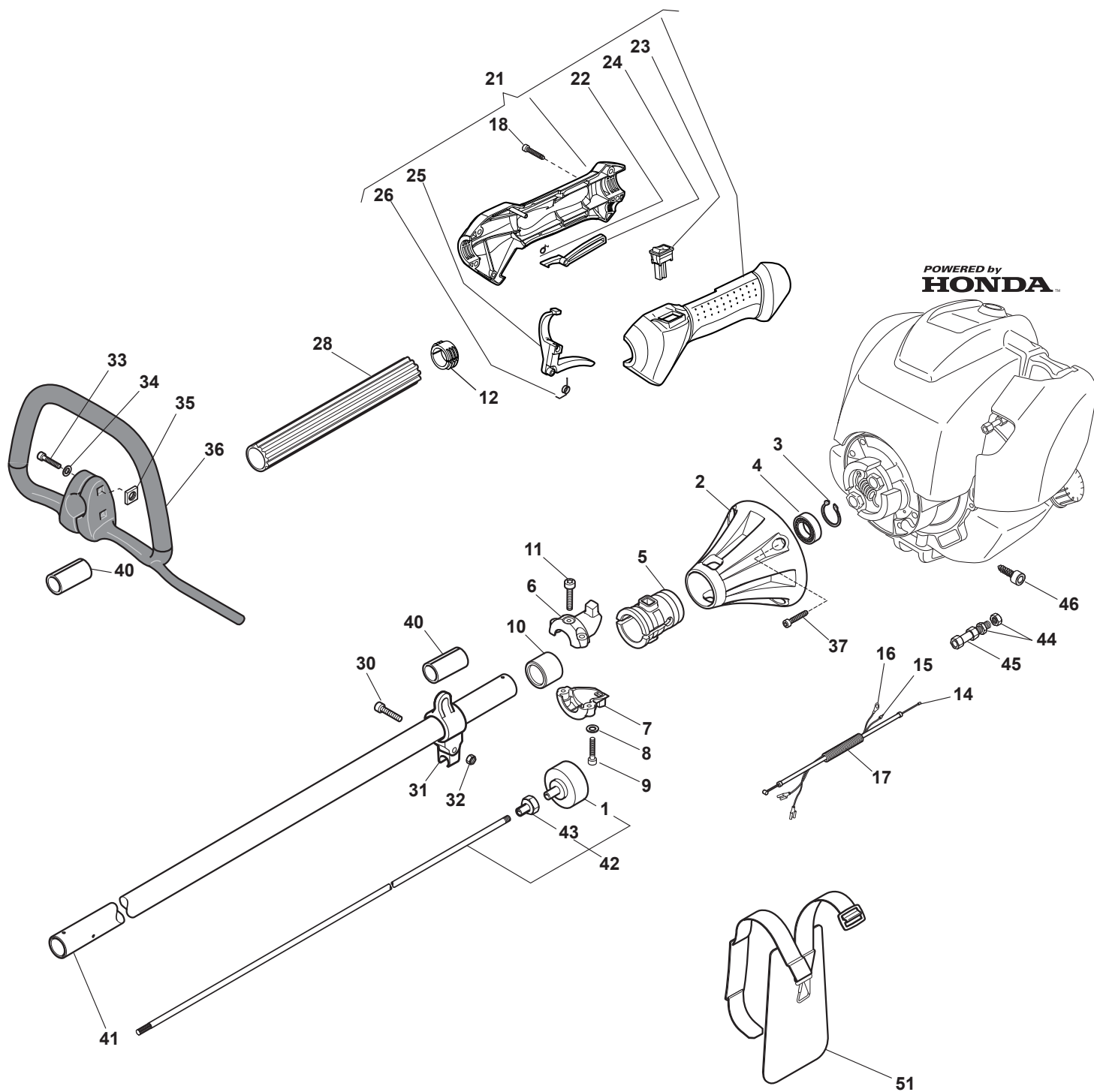
- Use GLOBAL GARDEN PRODUCT Genuine Spare Parts specified in the parts list for repair and/or replacement.
- The contents described in the parts list may change due to improvement.
- The drawings of the spare parts are only indicative and might not represent the part in question exactly.
- The indications "right" - "left" - "front" - "rear" refer to the position of the operator when using the machine.
- When placing orders of parts for repair and/or replacement, make sure that the illustrated parts list is the one applying to the machine's year of manufacture, as shown on the identification plate attached to the machine.

© Copyright 2013 Global Garden Products

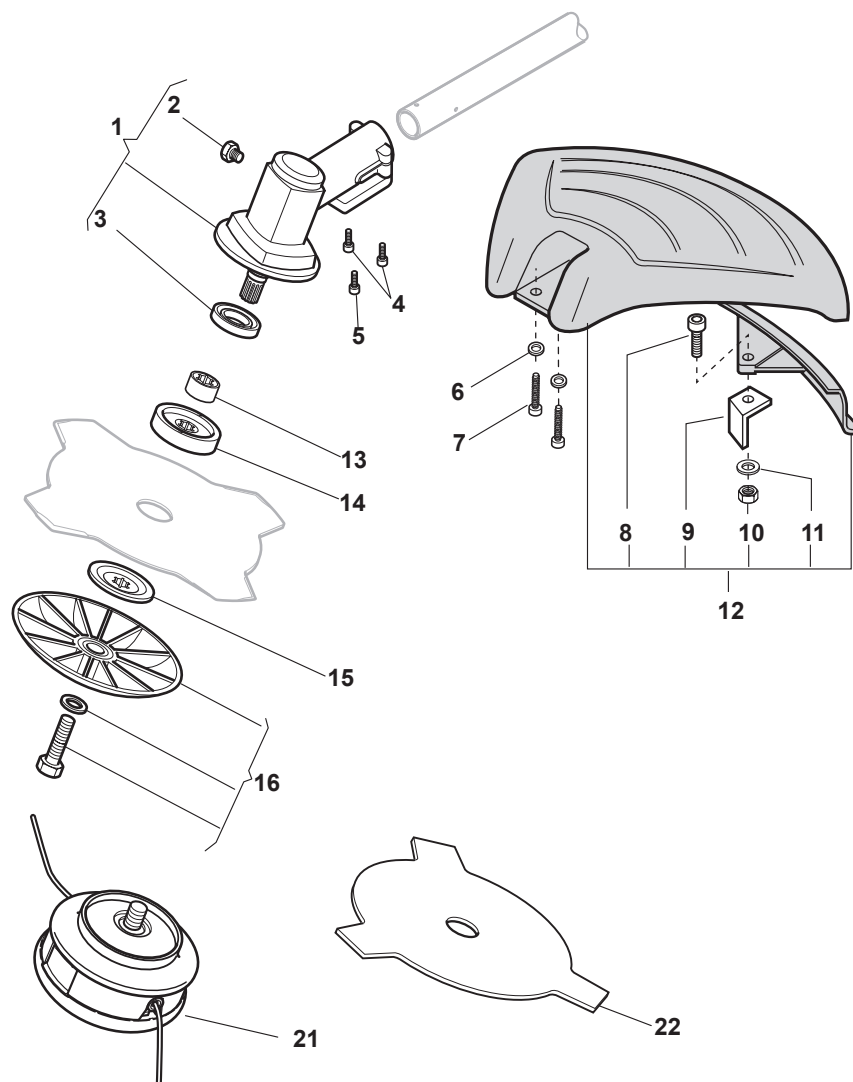
All content is subject to copyright by Global Garden Products and may not be reproduced in whole or in part by any means, electronic or otherwise, without prior written approval.

THIS INFORMATION IS NOT INTENDED FOR SALE OR RESALE, AND THIS NOTICE MUST REMAIN ON ALL COPIES.





POSITION	PART No.	Q.Ty	DESCRIPTION	NOTES
1	3L4121881/1	1	Clutch Drum	
2	323782006/0	1	Support Trasm.Assy	
3	3353080	1	Ring	
4	3112170	1	Bearing	
5	323275018/0	1	Grommet	
6	323720000/0	1	Support	
7	323720001/0	1	Support	
8	2370050	2	Washer	
9	2135030	2	Screw	
10	323044217/0	1	Bushing	
11	2135010	1	Screw	
12	323655003/0	2	Reduction	
14	123066030/0	1	Throttle Cable	
15	123065000/0	1	Coil-Switch Cable	
16	123065004/0	1	Earth Cable	
17	323290000/0	1	Wire Sheath	
18	123878055/0	4	Screw	
21	383300020/0	1	Handle Ass.Y	
22	3654300	1	Spring	
23	3210970	1	Bearing	
24	323315075/0	1	Safety Lever	
25	323315074/0	1	Throttle Lever	
26	1L3654270/1	1	Spring	
28	323170000/0	1	Spacer	
30	2135040	1	Screw	
31	323780000/0	1	Harness Support Ass.Y	
32	2412030	1	Nut	
33	2135050	2	Screw	
34	2312090	2	Washer	
35	2461030	2	Nut	
36	323300001/0	1	Front Handle Ass.Y	
37	2132110	4	Screw	
40	3721410	2	Rubber Facing	
41	383869067/0	1	Trasmission Pipe Ass.Y	
42	4251410	1	Trans.Shaft Assy	
43	3642221	1	Bearing Hub	
44	2412090	2	Nut	
45	1L3630600/1	1	Throttle Cable Adjuster	
46	2135020	1	Screw	
51	4253460	1	Harness	



POSITION	PART No.	Q.Ty	DESCRIPTION	NOTES
1	3L4252770/2	1	Gear Case Assy (Incl. 2÷21)	
2	2653460	1	Screw	
3	3121180	1	Seal Ring	
4	2135050	2	Screw	
5	2653090	1	Screw	
6	2312150	2	Washer	
7	2135060	2	Screw	
8	2135030	1	Screw	
9	3615000	1	Line Cutter	
10	112154330/0	1	Nut	
11	2312150	1	Washer	
12	8563570	1	Safety Cover Ass.Y	
13	3660680	1	Collar	
14	3641650	1	Upper Ring Nut	
15	3612650	1	Lower Ring Nut	
16	4560610	1	Stabilizer	
21	3L4353240/1	1	2 Hedges Nylon Head	
22	6031172	1	3 Teeth Disc 25 Cm	