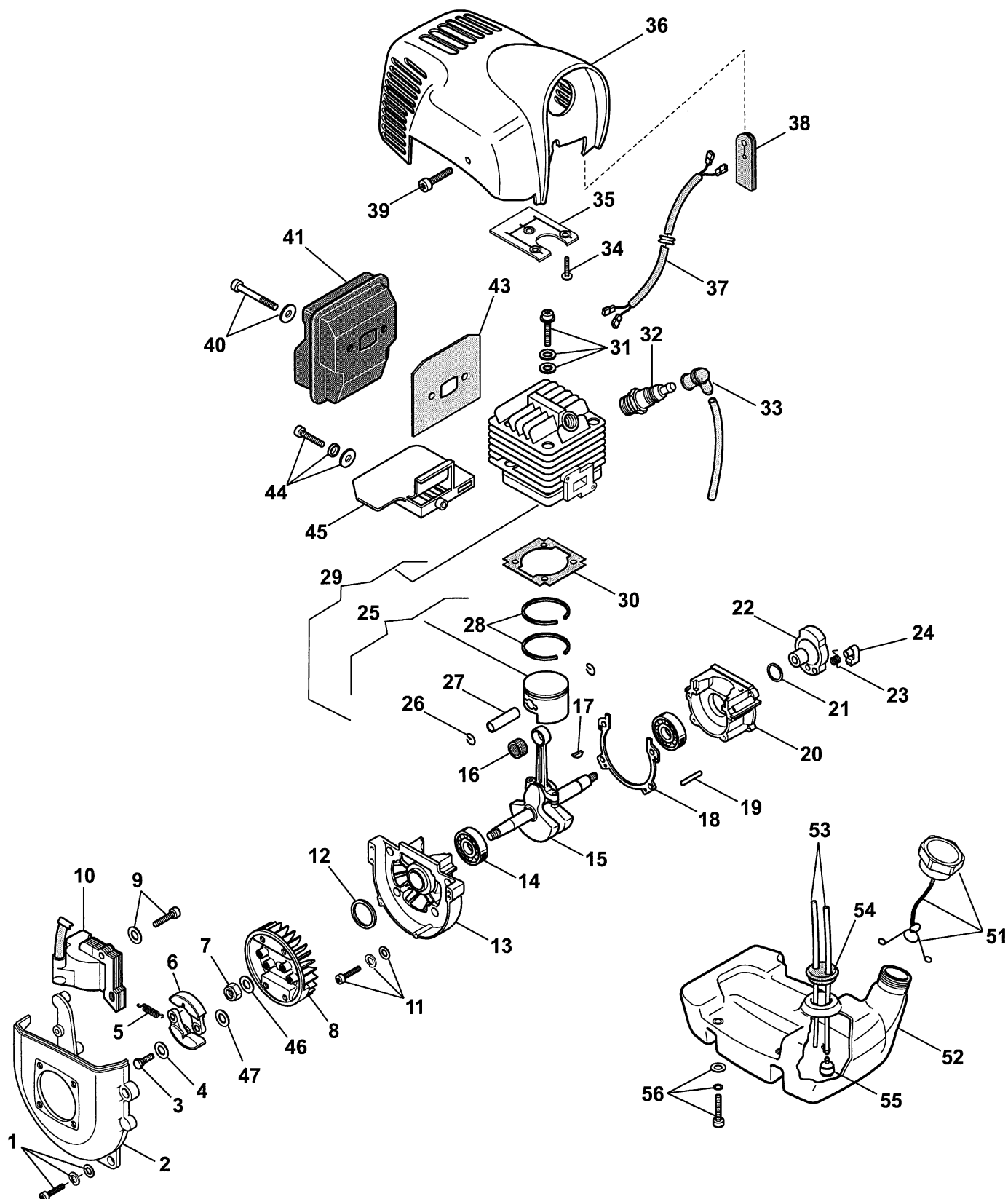


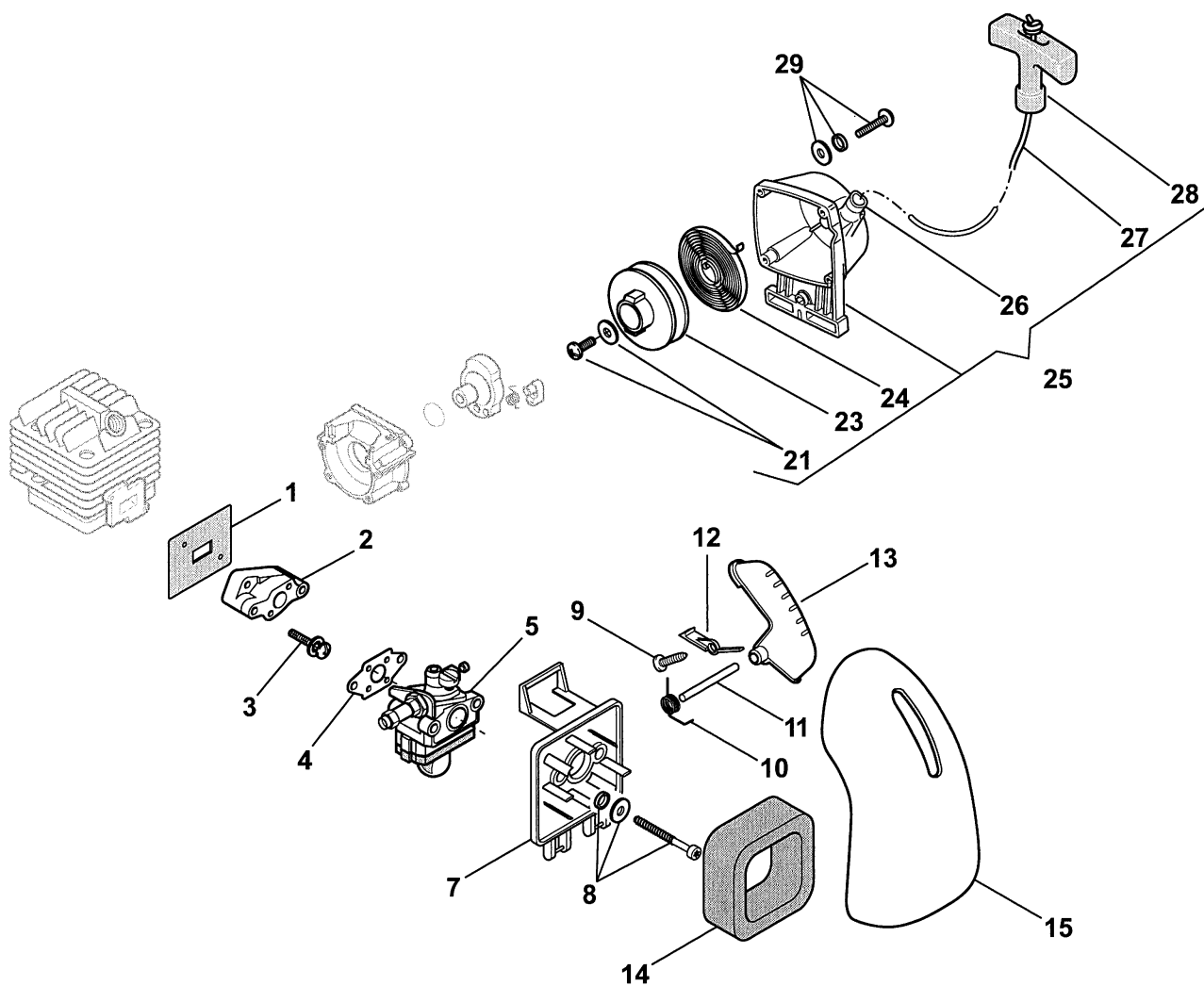
# Genuine Spare Parts

---

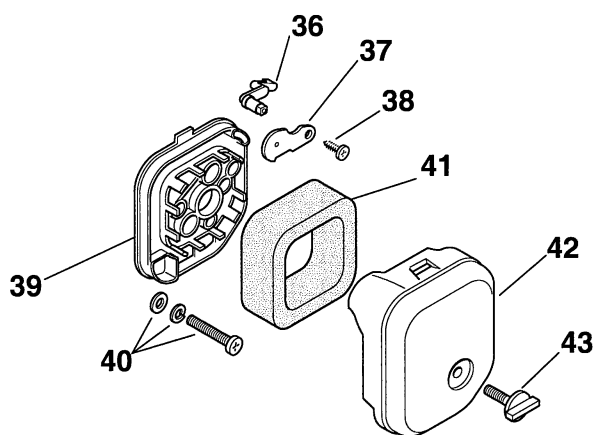




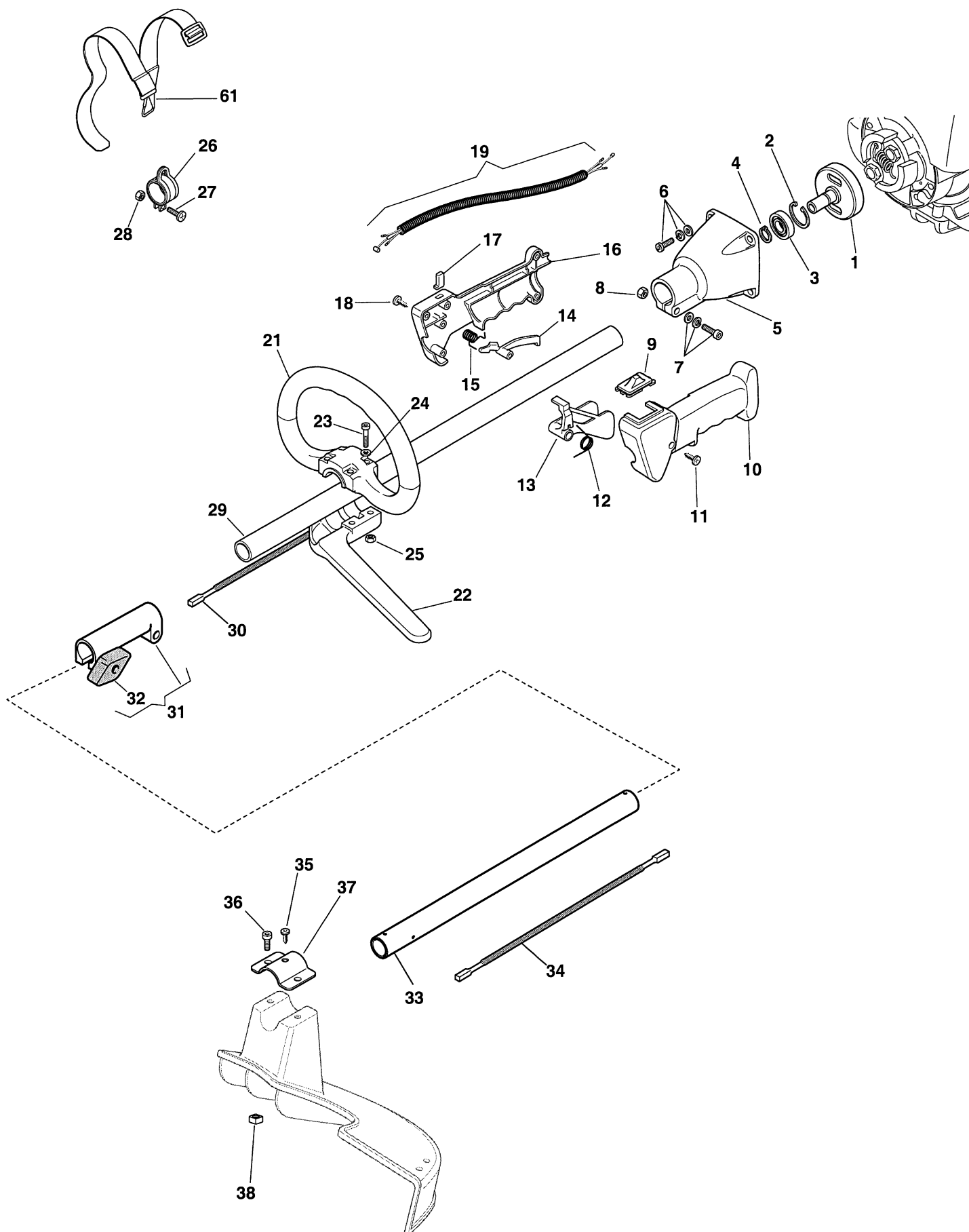
Utgåva Issue  2006- 12		Bildnr Picture No  1968A		ST 225J- SB 25J ST 290- ST 291 SB 27J- SB 29J MOTOR		ST 225J- SB 25J ST 290- ST 291 SB 27J- SB 29J ENGINE		Sida Page  276	
Pos. Fig.	Antal/Quantity				Art nr Part No	Benämning	Description	Sats Kit	Anmärkning Notes
	1025 6109	1029 1031 6116 6117							
1	4	4			1911- 4334- 01	Skrusats.....	Screw set.....		
2	1	1			1911- 4284- 01	Stödhus .....	Transm.support case.....		
3	2	2			1911- 4310- 01	Skruv .....	Screw .....		
4	2	2			1911- 4308- 01	Bricka .....	Washer .....		
5	1	1			1911- 4309- 01	Fjäder.....	Spring .....		
6	2	2			1911- 4307- 01	Koppling .....	Clutch unit.....		
7	1	1			1911- 4358- 01	Mutter.....	Nut .....		
8	1	1			1911- 4277- 01	Svänghjul.....	Flywheel .....		
9	2	2			1911- 4337- 01	Skrusats.....	Screw set .....		
10	1	1			1911- 4276- 01	Elektronikspole .....	Electronic coil .....		
11	4	4			1911- 4335- 01	Skrusats.....	Screw set .....		
12	1	1			1911- 4283- 01	Tätningsring .....	Seal ring .....		
13	1	1			1911- 4280- 01	Vevhus- främre .....	Crankcase- front.....		
14		2			1911- 4324- 01	Kullager .....	Ball bearing .....		
14	2				6981110	Kullager .....	Ball bearing .....		
15	1	1			1911- 4291- 01	Vevaxel .....	Crankshaft.....		
16	1	1			1911- 4292- 01	Nållager .....	Needle bearing .....		
17	1	1			1911- 4323- 01	Kil .....	Key .....		
18	1	1			1911- 4282- 01	Packning.....	Gasket .....		
19	3	3			1911- 4342- 01	Centerstift.....	Centering pin.....		
20	1	1			1911- 4281- 01	Vevhus- bakre .....	Crankcase- rear .....		
21	1	1			1911- 4283- 01	Tätningsring .....	Seal ring .....		
22	1	1			1911- 4306- 01	Startkopp.....	Starter cup .....		
23	1	1			1911- 4345- 01	Fjäder.....	Spring .....		
24	1	1			1911- 4305- 01	Startspärr .....	Starter hook .....		
25	1	1			1911- 4287- 01	• Kolv .....	• Piston .....		Inkl. pos 26 - 28
26	2	2			1911- 4290- 01	•• Låsring.....	•• Lock ring .....		
27	1	1			1911- 4289- 01	•• Kolvbult .....	•• Piston pin .....		
28	2	2			1911- 4288- 01	•• Kolvring .....	•• Piston ring.....		
29	1	1			1911- 4278- 01	Cylinder- kolv kpl .....	Cylinder- piston assy .....		Inkl. pos 25
30	1	1			1911- 4279- 01	Cylinderpackning .....	Cylinder gasket .....		
31	4	4			1911- 4334- 01	Skrusats.....	Screw set .....		
32	1	1			1911- 4331- 01	Tändstift .....	Spark plug .....		
33	1	1			1911- 4298- 01	Tändstiftshatt.....	Spark plug cover .....		
34	3	3			6981285	Skruv .....	Screw .....		
35	1	1			1911- 4319- 01	Skydd .....	Guard .....		
36	1	1			1911- 4341- 01	Motorkåpa- gul .....	Engine cover- yellow .....		
37	2	2			1911- 4297- 01	Kabel .....	Switch wire .....		
38	1	1			1911- 4296- 01	Kabelhållare .....	Cable retainer.....		
39	2	2			1911- 4325- 01	Skruv .....	Screw .....		
40	2	2			1911- 4336- 01	Skrusats.....	Screw set .....		
41	1	1			1911- 4315- 01	Ljuddämpare .....	Muffler .....		
43	1	1			1911- 4316- 01	Ljuddämparskydd.....	Muffler shield .....		
44	1	1			1911- 4337- 01	Skrusats.....	Screw set .....		
45	1	1			1911- 4318- 01	Skydd .....	Guard .....		
46	1	1			1911- 4343- 01	Bricka .....	Washer .....		
47	2	2			1911- 4430- 01	Bricka .....	Washer .....		
51	1	1			1911- 4424- 01	Tanklock .....	Fuel tank cap .....		
52	1	1			1911- 4311- 01	Bränsletank.....	Fuel tank .....		
53	2	2			1911- 4313- 01	Bränsleslang .....	Fuel hose .....		
54	1	1			1911- 4314- 01	Gummihylsa .....	Grommet.....		
55	1	1			1911- 4254- 01	Bränslefilter .....	Intake filter .....		
56	4	4			1911- 4327- 01	Skrusats.....	Screw set .....		



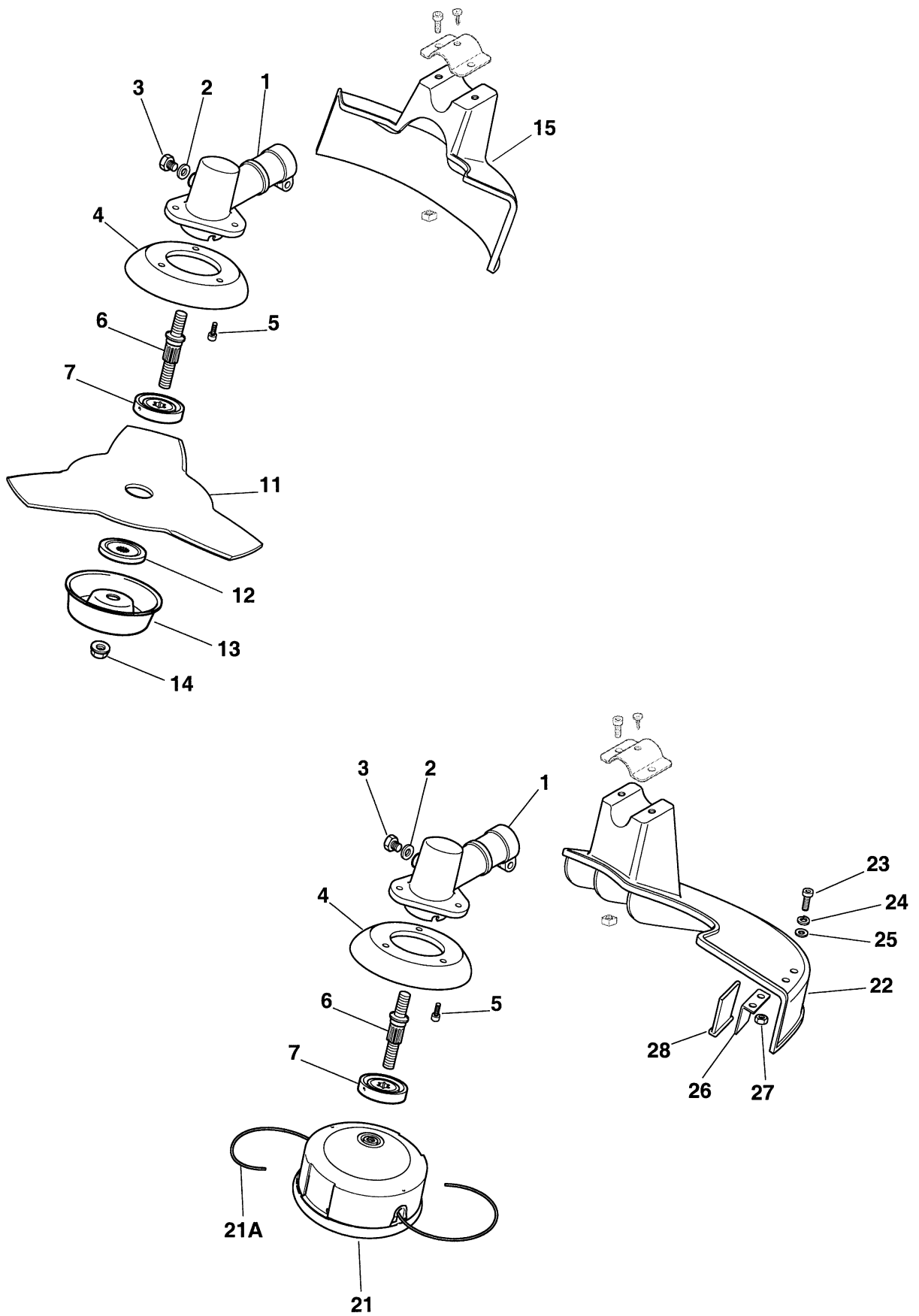
ST 225J - SB 25J



Utgåva Issue		Bildnr Picture No		ST 225J- SB 25J ST 290- ST 291 SB 27J- SB 29J FÖRGASARE		ST 225J- SB 25J ST 290- ST 291 SB 27J- SB 29J CARBURETTOR		Sida Page  278	
Pos. Fig.	Antal/Quantity				Art nr Part No	Benämning	Description	Sats Kit	Anmärkning Notes
	1025 6109	1029 1031 6116 6117							
1	1	1			1911-4286-01	Packning.....	Gasket.....		WYJ- 393 WYJ- 398A  



Utgåva Issue 2006- 12		Bildnr Picture No 2148		SB 25J RÖJARE RIGG		SB 25J BRUSH CUTTER DRIVE SHAFT		Sida Page 262	
Pos. Fig.	Antal/Quantity				Art nr Part No	Benämning	Description	Sats Kit	Anmärkning Notes
	6109 -11								
1	1				6981208	Kopplingshjul.....	Clutch drum .....		
2	1				6981271	Ring.....	Ring .....		
3	1				6981256	Kullager .....	Ball bearing .....		
4	1				6981272	Ring.....	Ring .....		
5	1				6981207	Transmissionsstöd .....	Transmission support .....		
6	4				1911- 4425- 01	Skruvsats.....	Screw set .....		
7	1				6981263	Skruvsats.....	Screw set .....		
8	1				1911- 4357- 01	Mutter.....	Nut .....		
9	1				6981230	Brytare.....	Switch .....		
10	1				6981231	Handtag- vä .....	Handgrip- LH.....		
11	2				6981269	Skruv .....	Screw .....		
12	1				6981232	Fjäder.....	Spring .....		
13	1				6981228	Gasreglage.....	Throttle lever .....		
14	1				6981229	Säkerhetsspärr .....	Safety lever .....		
15	1				6981226	Fjäder.....	Spring .....		
16	1				6981225	Handtag- hö .....	Handgrip- RH .....		
17	1				6981227	Knopp.....	Button .....		
18	4				1911- 4364- 01	Skruv .....	Screw .....		
19	1				6981233	Kablage.....	Cables+sheath.....		
21	1				6981234	Handtag- främre.....	Handle- front .....		
22	1				6981235	Spärrör .....	Barrier tube .....		
23	4				6981282	Skruv .....	Screw .....		
24	4				6981274	Bricka .....	Washer .....		
25	4				1911- 4356- 01	Mutter.....	Nut .....		
26	1				6981209	Fäste- sele.....	Support- harness .....		
27	1				1911- 4360- 01	Skruv .....	Screw .....		
28	1				1911- 4356- 01	Mutter.....	Nut .....		
29	1				6981291	Transmissionsrör.....	Transmission tube.....		
30	1				6981312	Drivaxel .....	Transmission shaft.....		
31	1				6981309	Rörkoppling.....	Joint.....		Inkl. pos 32
32	1				6981290	• Låsratt .....	• Knob .....		
33	1				6981292	Transmissionsrör.....	Transmission tube.....		
34	1				6981312	Drivaxel .....	Transmission shaft.....		
35	1				1911- 4429- 01	Skruv .....	Screw .....		
36	2				6981260	Skruv .....	Screw .....		
37	1				6981212	Fäste.....	Bracket.....		
38	2				6981213	Mutter.....	Nut .....		
61	1				6981210	Sele .....	Brace.....		
99	1				1911- 3212- 01	Skyddsglasögon.....	Protective goggles .....		Tillbehör/accessory





Utgåva Issue 2006- 12		Bildnr Picture No 2153		SB 25J RÖJARE SNÄCKVÄXEL		SB 25J BRUSH CUTTER GEAR CASE		Sida Page 264	
Pos. Fig.	Antal/Quantity				Art nr Part No	Benämning	Description	Sats Kit	Anmärkning Notes
	6109 -11								
1	1				6981219	Snäckväxel.....	Gear case .....		3T  <