

GENUINE SPARE PARTS

H 500 E Model Year 2012

- Use GLOBAL GARDEN PRODUCT Genuine Spare Parts specified in the parts list for repair and/or replacement.
- The contents described in the parts list may change due to improvement.
- The drawings of the spare parts are only indicative and might not represent the part in question exactly.
- The indications "right" - "left" - "front" - "rear" refer to the position of the operator when using the machine.
- When placing orders of parts for repair and/or replacement, make sure that the illustrated parts list is the one applying to the machine's year of manufacture, as shown on the identification plate attached to the machine.

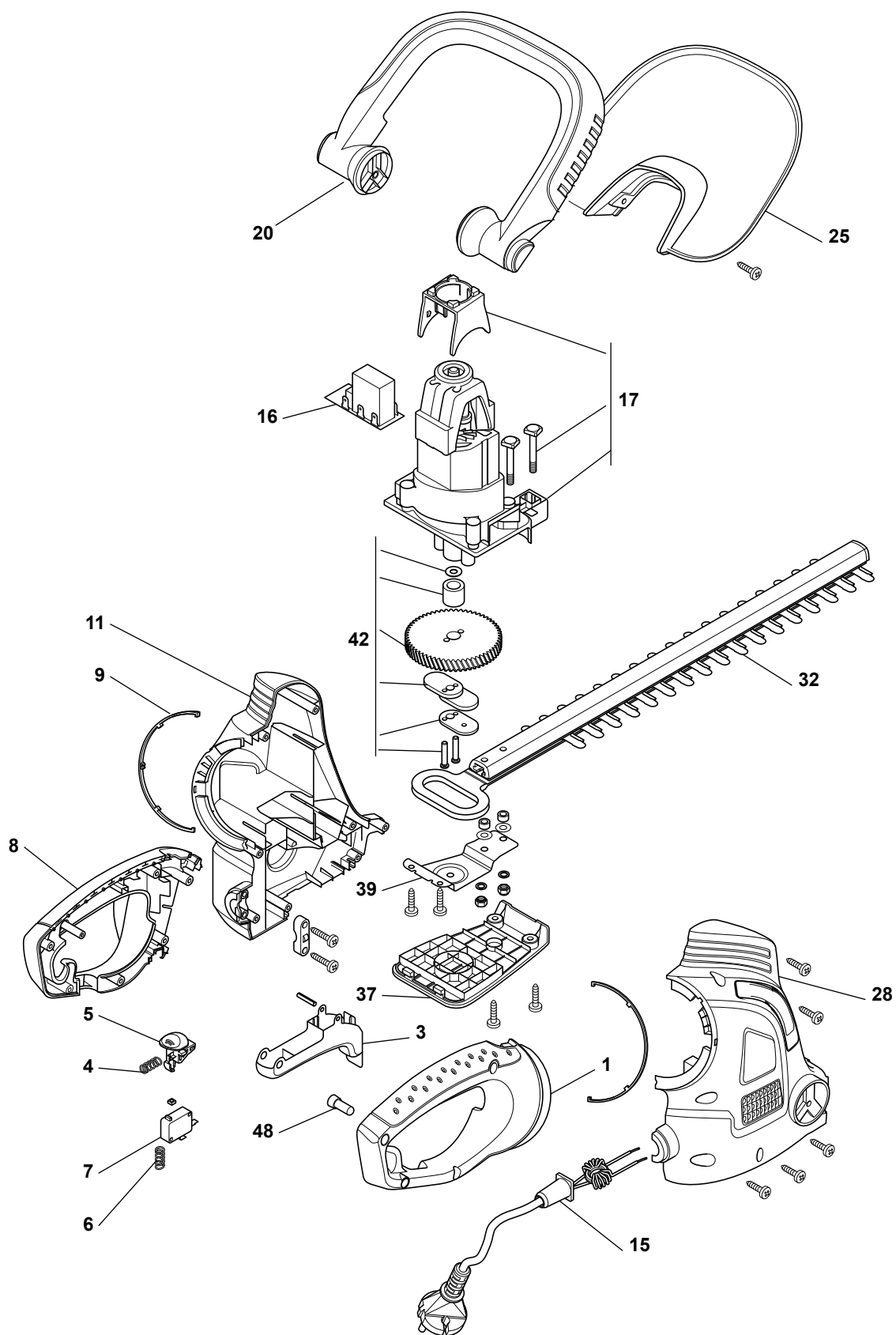
© Copyright 2012 Global Garden Products

All content is subject to copyright by Global Garden Products and may not be reproduced in whole or in part by any means, electronic or otherwise, without prior written approval.

THIS INFORMATION IS NOT INTENDED FOR SALE OR RESALE, AND THIS NOTICE MUST REMAIN ON ALL COPIES.

...THINKING GREEN





Position	Part No.	Q.Ty	Description
1	118800575/0	1	Right Handgrip
3	118800576/0	1	Switch Lever
4	118800577/0	1	Spring
5	118800578/0	1	Button
6	118800579/0	1	Spring
7	118800580/0	1	Switch
8	118800581/0	1	Left Handgrip
9	118800582/0	2	Ring
11	118800583/0	1	Left Handgrip
15	118800584/0	1	Power Cord Assy
16	118800585/0	1	Electronic Card
17	118800586/0	1	Motor
20	118800588/0	1	Front Handgrip Ass.
25	118800589/0	1	Guard
28	118800590/0	1	Right Handgrip
32	118800572/0	1	Blade Ass.Y
37	118800591/0	1	Lower Case
39	118800592/0	1	Blade Guard
42	118800593/0	1	Transmission Unit
48	118800594/0	1	Button